

skyVac®  
**ATOM  
SONIC**

**INSTRUCTION MANUAL**



## CONGRATULATIONS ON YOUR PURCHASE

The skyVac® wet and dry vacuum range has been designed and engineered for fast and thorough gutter clearance .

Please read the manual prior to use for instructions on setting up and maintaining your system.

### PACKAGE CONTENTS:



*Pole Number will depend on height package purchased. Contents may vary.*

<b>Motor Wattage:</b>	2800 Watts (2 x 1400)
<b>Inch Water Lift:</b>	110"
<b>Air Flow:</b>	7,166 LPM
<b>Container:</b>	45 Litres
<b>Weight:</b>	17.2 Kg
<b>Decibel Level:</b>	74 dB
<b>Mains Connection:</b>	240 Volts
<b>Power Cable Length:</b>	8 Metres
<b>Dimensions:</b>	48(L) x 48(W) x 77(H) cm

**CONTENTS:**

- pP2: Package Contents
- P3: System Overview
- P4: Vacuum Head
- P4: Removing Vacuum Head
- P5: Cartridge Filter
- P5: Float Valve
- P6: Suction Port
- P6: Blow Port
- P6: Power On / Off
- P6: Hose Attachment
- P7: Emptying Drum
- P7: Floor Tool Kit
- P8: Elite Pole System
- P8: Clamped Pole system
- P9: Elite Vac Release Cuff
- P10: Setting Up
- P11: Pole & Filter Maintenance
- P12: Best Practise
- P12: Trouble Shooting.

**SYSTEM OVERVIEW:**



**KEY SYSTEM FEATURES**



**skyVac® SUCTION POLES**



**skyVac® Elite Hairpin Neck Tool Holder :**  
Oversized neck angle allows debris to move easily through the bend, preventing blockages.

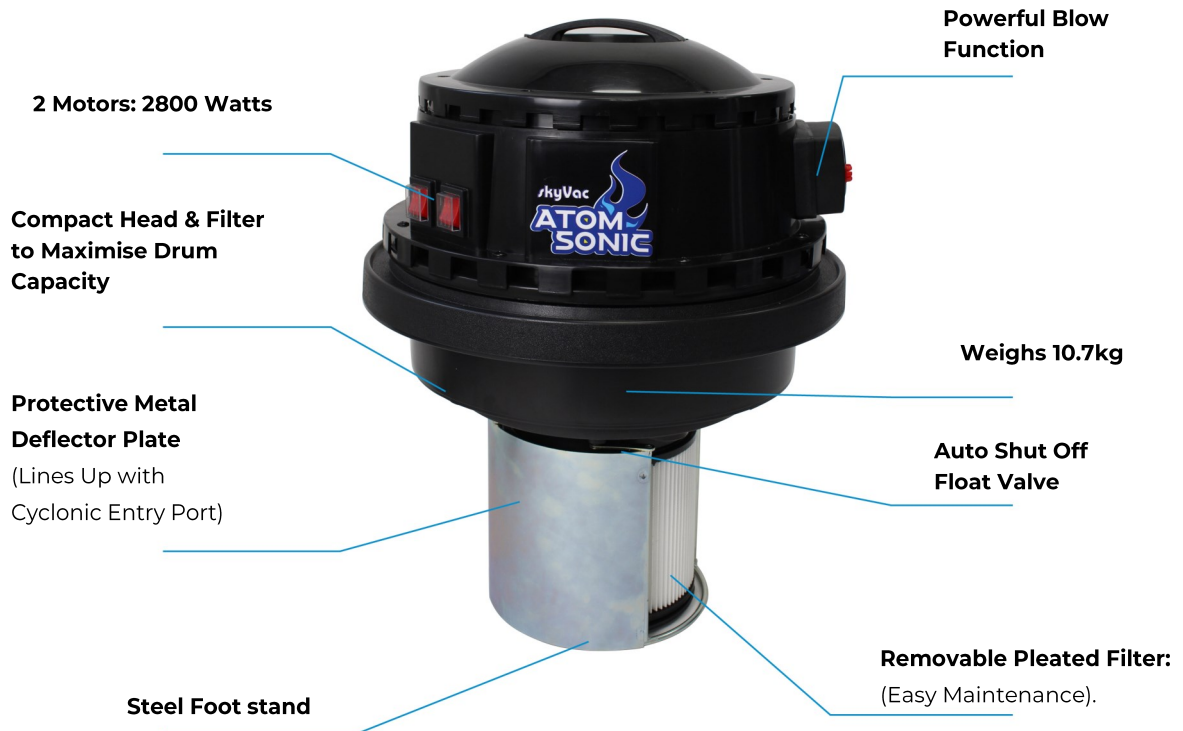
\*European Community Design Registration Number 008458913



**VACUUM HEAD:**



**HEAD & FILTER —KEY FEATURES**



**REMOVING VACUUM HEAD:**



**TO REMOVE THE VACUUM HEAD.**

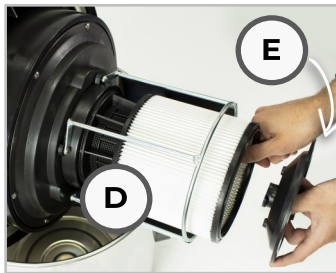
1. Ensure the vacuum head is turned off.
2. To release the clamps (A) pull the underside of the clamp out, then lift the top away from the head.
3. Lift the Vacuum head from the drum.
4. stand the suction head in a safe location—using the foot rest.



**TO REPLACE THE VACUUM HEAD:**

1. Lift the vacuum head and place onto the drum.
2. **IMPORTANT:** Position the filter debris protection plate (B) in-line with the vacuum entry port (C).
3. Secure the clamps (A) to the vacuum head.

## CARTRIDGE FILTER:



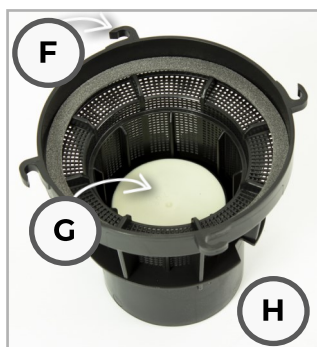
### TO REMOVE:

1. The cartridge filter (**D**) is housed within the steel deflector plate.
2. Rotate the cartridge filter end cap (**E**) anti-clockwise, remove and put safely to one side.
3. Ease the cartridge filter out of the housing.

### TO REPLACE:

5. Ease the cartridge filter (**D**) inside the housing, over the top of the float valve unit (**H**)
6. Secure in place with the filter end cap (**E**).
7. Rotate clockwise to lock in place.

## FLOAT VALVE:

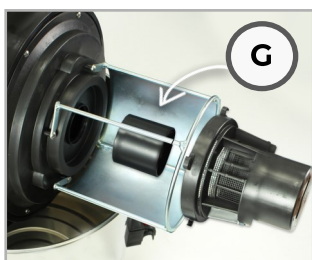


The system features a float valve which automatically shuts the motor off when liquid reaches a set level in the drum.

Float Valve activation is indicated by:

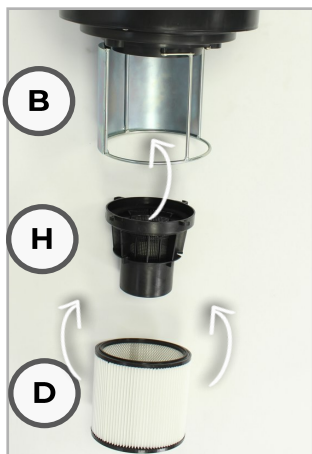
- **Temporary loss of suction**
- **Change in vacuum sound.**

Once the float valve (**G**) is triggered the system should be turned off and emptied. Ensure that the float valve is clean and free of debris before replacing.



### TO REMOVE:

1. Remove the filter end cap (**E**), and cartridge filter (**D**) as per instructions.
2. Hold the top of the float valve unit (**H**) and rotate anti-clockwise, unlocking the four clips (**F**).



### TO REPLACE:

1. Ensure the float valve (**G**) is placed in the unit with the "open" end facing down and the white heat resistant pad facing upwards.
2. Insert the float valve unit (**H**) inside the steel deflector plate (**B**).
3. Rotate the unit clockwise to lock the four clips (**F**) in place.
4. Position the cartridge filter over the float valve, and secure in place with the filter end cap (**E**).



## SUCTION PORT:



### TO INSERT HOSE INTO SUCTION PORT:

1. Push the hard cuff (**K**) into the cyclonic side entry port (suction port)
2. Once correctly inserted, the cuff will click / lock in place.

### TO REMOVE HOSE FROM SUCTION PORT:

1. To remove, press down on the red button (**I**) on the side of the cyclonic port to unlock.

## BLOW PORT:



### TO INSERT HOSE INTO BLOW PORT:

1. Push the hard cuff (**K**) into the blow port.
2. Once correctly inserted, the cuff will click / lock in place.

### TO REMOVE HOSE FROM BLOW PORT:

1. Slide the red button away from the blow port.
2. Once unlocked, the cuff will release.

## POWER ON / OFF:



### POWER ON:

1. Press each button, one at a time.
2. Each button will light up red to indicate the motor is on.  
*Avoid pressing both buttons at once as this may cause a power surge.*

### POWER OFF:

1. Switch each button off in turn.

## HOSE ATTACHMENTS:



**J**

### SOFT CUFF:

Hose to Pole Cuff:  
Push the soft cuff over the bottom of the lowest pole.

**K**

### HARD CUFF:

Hose to Drum Cuff—Inserts into the suction port.



The Elite Vac Release Cuff Pole is the bottom pole.

## EMPTYING DRUM:

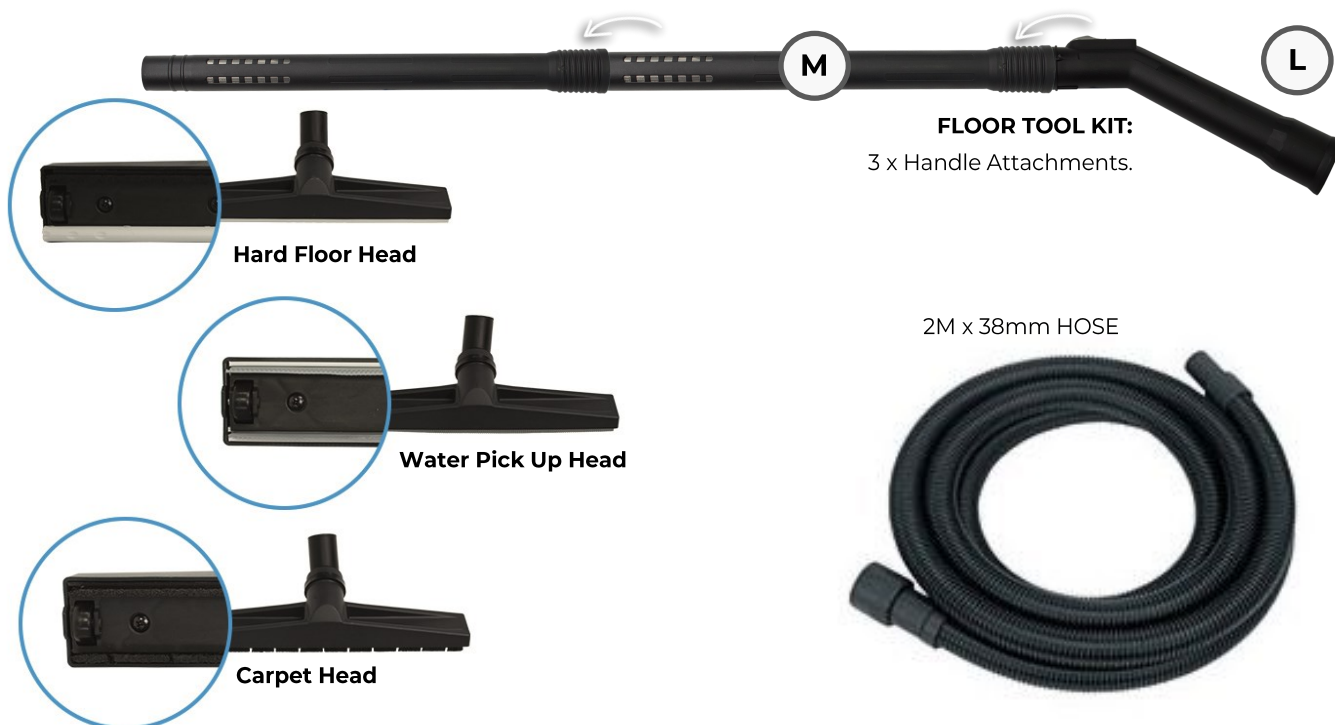


1. Ensure the motor is turned off.
2. Unclamp, and remove the vacuum head.
3. Grasp the bumper skirt, and the side drum handle, lift and tilt the drum to pour out the contents.
4. Once empty, tilt the drum back onto the trolley base.

## FLOOR TOOL KIT:

### TO ASSEMBLE AND USE:

1. 2M x 38mm hose for use with floor tool kit only.
2. Insert the angled suction handle (**L**) into the 2 x suction poles (**M**).
3. Insert required floor brush head.
4. Insert the 50mm hard cuff into the vac suction port.
5. Insert smaller hose hard cuff into the handle of the floor tool kit.



## CLAMPED POLE SYSTEM:

**POSITIVE STOP**



**POLE BASE**

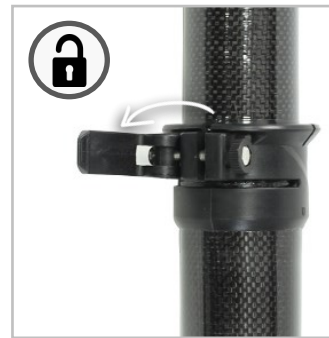
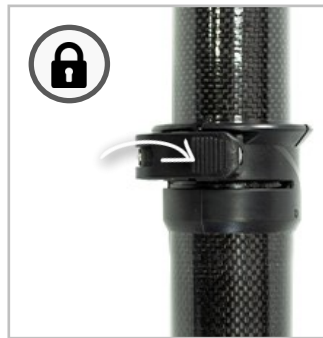
**SECURE LOCKING CLAMP**



**LOCKING LEVER**

The skyVac® clamped pole system features a “Positive stop” or ridged edge around the base of the pole. The ridge ensures that the pole base stops at the correct point when inserted into the unlocked clamped pole (male into female). Once the ridge is positioned inside the neck, the lever can be pulled closed to secure the pole in place.

## ELITE CLAMP SYSTEM:



### **ADJUST TENSION:**

Adjust the screw by twisting the lever for a secure fit.

**TIGHTEN:** Twist clockwise.

**LOOSEN:** Twist anti-clockwise.

### **LOCK / UNLOCK:**

Secure the clamps in place to lock the poles together for use.

**LOCK:** Push lever forward, so it rests flat against the screw fixture

**UNLOCK:** Pull lever back away from the pole.



**ELITE VAC RELEASE CUFF:**



**SKYVAC® VAC RELEASE CUFF:**

Features an air inlet chamber which enables suction control by twisting the cuff and opening / closing the chamber.

**DOOR OPEN:** To cut suction.

**DOOR CLOSED:** To engage suction.



**USING THE VAC RELEASE CUFF:**

1. The Vac release suction pole must be the bottom pole, closet to the operator.
2. Ensure the intended “drop” area below is clear .
3. Place the end tool over the gutter turf and when securely held, lift the turf up out of the gutter.
4. Rotate the Vac cuff chamber, clockwise, allowing air into the chamber, cutting suction. The Turf will drop.
5. Close the Vac chamber by twisting anti-clockwise to restart the suction.

**END TOOLS & HAIRPIN NECK:**



\*EUROPEAN COMMUNITY DESIGN REGISTRATION NUMBER 008458913



**CLAMP:  
FOR END  
TOOL**

**BASE:**

**5 x END TOOLS:** 5 x Elite Tools: Aluminium Long end tool / Dual End Multi Tool / Aluminium Tapered end tool / Long soft tool Aluminium Crevice end tool

skyVac® Elite Hairpin\* tool holder – for firmer control and less risk of blockages.

\*European Community Design Registration Number 008458913

## SETTING UP:



### ASSEMBLING POLES TO HEIGHT:

1. Line suction poles up against the side of the property, with the clamps open.
2. Insert the gutter tool into the unclamped neck of the Hairpin tool holder.
3. Close the neck clamp to lock the gutter tool in place.
4. Insert the Hairpin neck into the top pole and lock in place.
5. Take the top suction pole and raise it up the side of the property, resting the neck against the wall for support.
6. Insert the base of the TOP POLE into the neck of the bottom pole and secure in place.
7. Feather the stacked suction poles up against the side of the property.
8. Repeat to a maximum of 8 poles (Including the Vac Release cuff)
9. The FINAL POLE is ALWAYS the VAC Release Cuff.
10. Attach the Vac hose cuff to the base of the bottom pole (Vac Release cuff).
11. Hook the end tool in the gutter for support, and attach the vac hose to end pole.
12. Start up the vacuum.

**Ensure that the skyVac® Atom sonic is secured in place on surfaces with an incline.**

## POLE & FILTER MAINTENANCE:

### DIS-ASSEMBLING POLES:

1. With the poles resting against the side of the building, unclamp and remove the lowest suction pole.
2. Repeat the process until all the poles have been uncoupled.
3. Ensure the top clamp is closed flat before putting poles away to prevent damage.



### FILTER MAINTENANCE:

1. For maximum suction, start each project with a clean and dry filter.
2. We recommend keeping the filter in at all times to protect the motor.
3. Remove and clean your filter at the end of each project.
4. Start new projects with a CLEAN and DRY filter.
5. Replace the cartridge filter ever 4 Months.
6. Do not use torn or damaged filters as these can allow dirt to get into the system which can damage the motor. Replace damaged filters immediately.

### TO CLEAN:

1. Brush the sides of the filter with a stiff brush to remove excess dirt.
2. If the filter is exceptionally dirty, use a domestic hose with spray jet attachment to wash down.
3. Brush around the air intake section of the vacuum head.

## BEST PRACTISE:



**1** Start each project with a clean DRY filter.



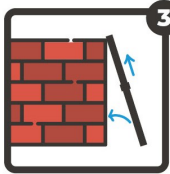
**4** Have a clean bucket of on standby! To help clear blockages during gutter clearance projects.



**2** Regularly inspect your filter for wear and tear. Replace every four months.



**5** At the end of the task, rinse your equipment through with a clean bucket of water. Drop your poles in the bucket and suck clean water through..



**3** Build your poles up against the side of a building. DO NOT assemble on the ground and then lift.



**6** Make sure your poles and end tools are free of dirt and grit.

## TOUBLE-SHOOTING:

SYMPTOM	POTENTIAL CAUSE	REMEDY
<b>Loss of Suction</b>	Blocked filter, or full bin	Clean filter and empty bin
<b>Loss of Suction</b>	Blockages in neck, poles, or vac entrance	Clear blockages
<b>Loss of Suction</b>	Leaves blocking end tool	Tap leaves & end tool on roof tiles
<b>Loss of Suction</b>	Damp debris build up, inside flexi hose or tubes	Suck water from the bucket.
<b>Machine stopped working</b>	Loss of power	Check power supply